



# TECHNOLOGY AND DESIGN OF FUTURE

**Fireplace stoves  
and design fireplaces**

<b>CONTENT</b>	page
<b>Romotop</b>	4
<b>Respecting nature</b>	5
<b>Technology</b>	6
<b>Fireplace stoves</b>	8
Alea, Alea A	10
Aledo	12
Burgos	13
Espera	14
Esquina 3G	15
Evora, Evora A, Evora T	16
Fantasy	19
Gremio 1, 2, 3 – Gremio 1G, 2G, 3G	20
Gremio 4, 5 – Gremio 4G, 5G	21
Laredo, Laredo A, Laredo F, Laredo T	22
Lugano, Lugano A	26
Lugo N, Lugo N A, Lugo N BF	28
Navia, Navia G	31
Ovalis, Ovalis A, Ovalis T, Ovalis G, Ovalis G A	33
Riano, Riano N	38
Siena N	40
Soria N	41
Stromboli N	43
Tala N	44
Teon	45
<b>Design fireplaces</b>	46
Cara C 02, Cara CS 02, Cara C N 03, Cara CS N 03	48
<b>Technical parameters</b>	50
<b>Glaze colours, body finishes, stones</b>	54





**ROMOTOP is one of the European leaders in the production of fireplace inserts and stoves.**

ROMOTOP fireplaces and inserts appeal to their customers by design, top quality workmanship and innovative technical solutions of their products. The wide range of products meets the needs of standard and low-energy houses. Thermal energy can be stored in storage elements or through heat exchangers to be distributed throughout the the dwelling. A choice of handmade tiles is available ceramics or natural stones.

More than a million households worldwide already enjoy from ROMOTOP products. Every product that leaves the production plant in Suchdol nad Odrou is the result of the joint efforts of all employees. Thanks to its modern production facilities, competent employees and qualified sales staff, the brand ROMOTOP is one of the European leaders in the industry. Production process with a high degree of robotization takes place on 30,000 m2. Flexibility in deliveries to the customer is supported by our own logistics centre with truck transport.

Technology is what we enjoy, what we live for. Thanks to natural evolution, we know that the strongest in the industry today must no longer rely solely on the wisdom and experience of our of our ancestors. And it is out of respect for them that we feel obliged to keep pushing the boundaries as they once did. Where others still use words like fortel, history and tradition, we think about patents, innovation, the latest production technologies, efficiency and automation.

**TECHNOLOGY  
AND DESIGN  
OF FUTURE**



**We respect nature, ecology is not only a topic for us, but also a commitment.**

Fireplace stove and inserts from Romotop meet the strictest ecological limits required by EU directives and standards such as Ecodesign, German BImSch V2, Austrian 15a B-VG and others. Our products contribute to environmental protection and the sustainable use of natural energy sources. Using wood for heating in modern stoves and fireplace inserts is proven to be environmentally friendly.

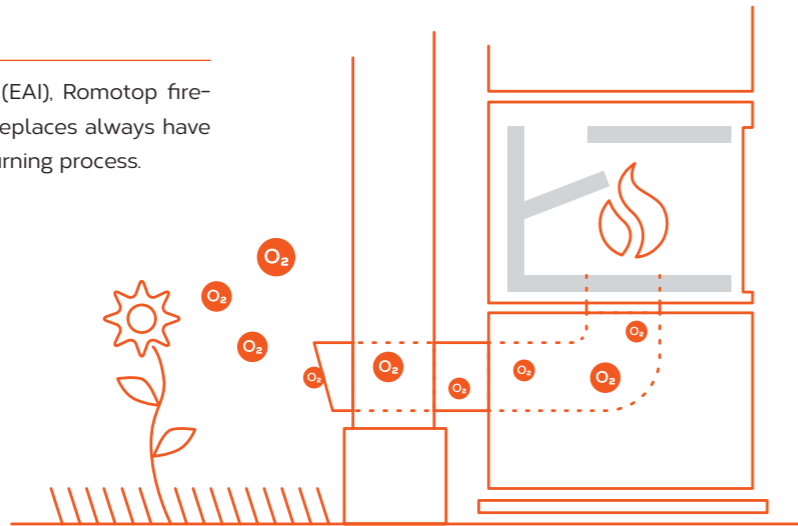




# Technology

## Always enough oxygen

Thanks to the external air intake (EAI), Romotop fireplace stoves, inserts and design fireplaces always have sufficient combustion air for the burning process.



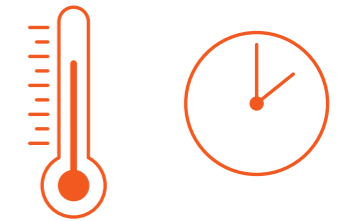
## Precise and simple air control

Just like you, Romotop fireplace stoves, inserts and design fireplaces need air to function properly. Primary air helps the wood catch fire, while secondary air keeps the glass perfectly clean. The supply of both primary and secondary air can be controlled by a single element. Everything is designed for your maximum comfort.



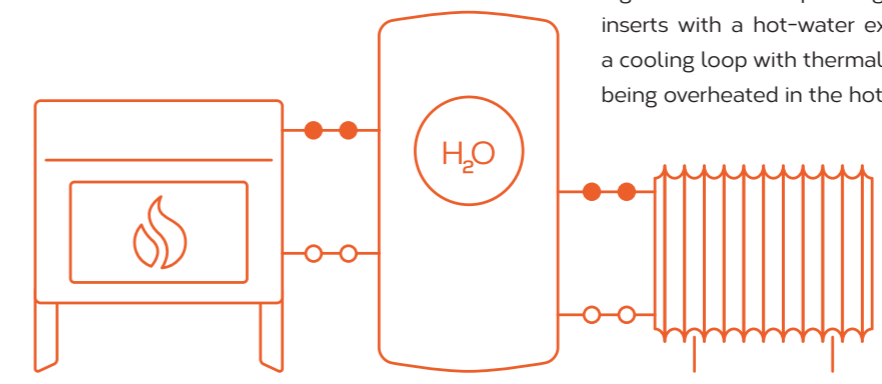
## Better combustion dynamics

We always offer only the best. This is also true of the chamotte brick in the combustion chamber, which are characterized by high material stability, better combustion, accumulation properties and improved combustion dynamics.



## Fireplace stoves and inserts with a hot-water exchanger

Romotop fireplace stoves and inserts with a hot-water exchanger offer high combustion efficiency and low heating costs. In combination with an accumulation tank, they can be used as the primary source of heating. For maximum operating safety, fireplace stoves and inserts with a hot-water exchanger are equipped with a cooling loop with thermal valve, which prevents water being overheated in the hot-water exchanger.



### Legend

$P_R$	Regulated output
$P_h$	Regulated hot-water output
$\oplus$	Dimensions H x W x D
$\#$	Weight
%	Efficiency



**3S**  
Cladding on three sides  
– three-sided fireplace insert





# FIREPLACE STOVES





## Alea

The elegant, slim shape of the Alea fireplace stove is a perfect match for every interior. The rotating combustion chamber means you won't be restricted to watching the beautiful living flames from just a single angle.

A+

### Alea 01 ceramic

<b>P<sub>r</sub></b>	2.9-7.4 kW
<b>+</b>	1305 × 468 × 468 mm
<b>⚖</b>	159 kg
<b>%</b>	82.9 %



Alea 01  
ceramic



Alea 02  
serpentine



Alea 03  
steel



Alea 04  
sandstone



## Alea Accumulation

The Alea A accumulation fireplace stove will always adapt to your needs. Its rotating combustion chamber ensures you will always have a great view of the beautiful dancing flames, and the accumulation system above the combustion chamber will let you make great use of the heat released during combustion.

A+

### Alea 01 A ceramic

<b>P<sub>r</sub></b>	2.9-7.4 kW
<b>+</b>	1584 × 468 × 468 mm
<b>⚖</b>	173 kg
<b>%</b>	82.9 %

 Accumulation



Alea 01 A  
ceramic



Alea 02 A  
serpentine



Alea 03 A  
steel



Alea 04 A  
sandstone





## Aledo

Aledo fireplace stoves are characterized by an elegant design, sophisticated central air intake and a fully glazed door that provides an uninterrupted view of the flames.

A+

Aledo 01 ceramic	
P <sub>r</sub>	3-7.8 kW
±	862 × 740 × 321 mm
♣	151 kg
%	83.5 %



Aledo 01  
ceramic



Aledo 02  
serpentine



Aledo 03  
steel



## Burgos

A generous combustion chamber with high quality design components and precise, clean lines. The Burgos fireplace stove gives any interior a unique atmosphere.

A+

Burgos 02 serpentine	
P <sub>r</sub>	3.8-9.8 kW
±	1175 × 756 × 507 mm
♣	242 kg
%	82.7 %



Burgos 01  
ceramic



Burgos 02  
serpentine



Burgos 03  
steel



Burgos 04  
sandstone





## Espera

The innovative hot-water exchanger (HE) solution together with a double-glazed door significantly increases the overall efficiency and value of the Espera fire-place stove.

A

### Espera 01 ceramic

<b>P<sub>R</sub></b>	5-13 kW
<b>P<sub>0</sub></b>	3,5-9,1 kW
<b>+</b>	1080 × 540 × 518 mm
<b>♁</b>	218 kg
<b>%</b>	80,1 %



Hot-water exchanger



Espera 01  
ceramic



Espera 02  
serpentine



Espera 03  
steel



## Esquina 3G

This slim, angled model with a tall glazed door will catch the attention of every visitor. The exceptional corner glass door provides more intense contact with the flames from all parts of the room.

A+

### ESQUINA 3G steel

<b>P<sub>R</sub></b>	3-7,7 kW
<b>+</b>	1506 × 403 × 403 mm
<b>♁</b>	170 kg
<b>%</b>	81,4 %



Esquina 3G  
steel



Esquina 3G with woodshed  
steel



wide woodshed  
steel



narrow woodshed  
steel





## Evora

Minimalistic, yet with a dominant shape. The Evora fire-place stove is a perfect fit for all interiors as it does not take up any more space than strictly necessary.

A

### Evora 07 sandstone

<b>P<sub>r</sub></b>	2-6,5 kW
<b>+</b>	996 × 528 × 398 mm
<b>⊞</b>	126 kg
<b>%</b>	80,5 %



## Evora Accumulation

A slender, tall accumulation stove with a popular oval base and high heat radiation capacity.

A

### Evora 03 A steel

<b>P<sub>r</sub></b>	2-6,5 kW
<b>+</b>	1312 × 528 × 398 mm
<b>⊞</b>	131 kg
<b>%</b>	80,5 %

 Accumulation



Evora 01  
ceramic



Evora 02  
serpentine



Evora 03  
steel



Evora 07  
sandstone



Evora 01 A  
ceramic



Evora 02 A  
serpentine



Evora 03 A  
steel



Evora 04 A  
sandstone





## Evora T

The Evora T fireplace stoves provides more than one point of view of the flames. The rotating combustion chamber allows you to view your fire from multiple angles.

A

### Evora T 01 ceramic

<b>P<sub>r</sub></b>	2-6,5 kW
<b>+</b>	997 × 528 × 398 mm
<b>Ⓜ</b>	124 kg
<b>%</b>	80,5 %



Evora T 01  
ceramic



Evora T 02  
serpentine



Evora T 03  
steel



Evora T 07  
sandstone



## Fantasy 1, 2

In fireplace stoves FANTASY, impact has been put on bright, modern design and workmanship quality. Well-balanced proportions, design door glass with open view of the flame invites to relaxation and enjoying the moment.

For full shades offer check Romotop website with this model.

A

### Fantasy 1 ceramic

<b>P<sub>r</sub></b>	2,9-7,5 kW
<b>+</b>	1598 × 548 × 392 mm
<b>Ⓜ</b>	197 kg
<b>%</b>	80,6 %

### Fantasy 2 ceramic

<b>P<sub>r</sub></b>	2,9-7,5 kW
<b>+</b>	1455 × 557 × 402 mm
<b>Ⓜ</b>	193 kg
<b>%</b>	80,6 %

 Accumulation



Fantasy 1  
ceramic



Fantasy 2  
ceramic





## Gremio 1, 2, 3 – Gremio 1G, 2G, 3G

Regardless its conventional or rather rustic design, this unit is suitable for modern interiors as well. Tiled fireplace stove GREMIO feature perfect matching of shapes of ceramic tiles used for cladding. Three models of this fireplace stove with common technical base are on choice, however, each type makes an impression of its own.

For full shades offer check Romotop website with this model.

A

Gremio 1 ceramic	
<b>P<sub>r</sub></b>	2.9–7.5 kW
<b>+</b>	1455 × 617 × 432 mm
<b>⚖</b>	201 kg
<b>%</b>	80.6 %

 Accumulation



Gremio 1  
ceramic



Gremio 2  
ceramic



Gremio 3  
ceramic



Gremio 3G  
ceramic  
door with design glass



## Gremio 4, 5 – Gremio 4G, 5G

Tiled fireplace stove GREMIO feature perfect matching of shapes of ceramic tiles used for cladding. Three models of this fireplace stove with common technical base are on choice, however, each type makes an impression of its own.

For full shades offer check Romotop website with this model.

A

Gremio 4 ceramic	
<b>P<sub>r</sub></b>	2.9–7.5 kW
<b>+</b>	1451 × 741 × 457 mm
<b>⚖</b>	214 kg
<b>%</b>	80.6 %

Gremio 5 ceramic	
<b>P<sub>r</sub></b>	2.9–7.5 kW
<b>+</b>	1453 × 616 × 431 mm
<b>⚖</b>	199 kg
<b>%</b>	80.6 %

 Accumulation



Gremio 4  
ceramic



Gremio 5  
ceramic



Gremio 5G  
ceramic  
door with design glass





## Laredo

The door made completely of glass with stainless steel details lends the Laredo fireplace stove an attractive and unique look.

A

### Laredo 04 sandstone

<b>P<sub>r</sub></b>	2-6,5 kW
<b>+</b>	996 × 528 × 398 mm
<b>Ⓜ</b>	128 kg
<b>%</b>	80,5 %



Laredo 01  
ceramic



Laredo 02  
serpentine



Laredo 03  
steel



Laredo 04  
sandstone



## Laredo Accumulation

Laredo A is a picture of elegance. A full-glass door with stainless-steel elements and accumulation that efficiently utilizes the heat released by the stove.

A

### Laredo 01 A ceramic

<b>P<sub>r</sub></b>	2-6,5 kW
<b>+</b>	1312 × 528 × 398 mm
<b>Ⓜ</b>	142 kg
<b>%</b>	80,5 %

 Accumulation



Laredo 01 A  
ceramic



Laredo 02 A  
serpentine



Laredo 03 A  
steel



Laredo 04 A  
sandstone





## Laredo F

If you're looking for the perfect companion for long winter evenings, a Laredo F fireplace stove is the perfect choice.

A

Laredo F 02 serpentine	
P <sub>R</sub>	2-6.5 kW
✚	996 × 520 × 318 mm
📦	158 kg
%	80.5 %



Laredo F 01  
ceramic



Laredo F 02  
serpentine



Laredo F 03  
steel



## Laredo T

The beautiful and elegant Laredo T fireplace stove provides a view of the flames from almost any angle.

A

Laredo T 03 steel	
P <sub>R</sub>	2-6.5 kW
✚	975 × 528 × 398 mm
📦	124 kg
%	80.5 %



Laredo T 01  
ceramic



Laredo T 02  
serpentine



Laredo T 03  
steel



Laredo T 04  
sandstone





## Lugano

The oval shape of the Lugano fireplace stove lends your interior a cosy feeling. It includes pleasant details such as a sill above the combustion chamber and a door handle whose technical design gives the fireplace stove an elegant look.

A<sup>+</sup>

Lugano 01 ceramic	
P <sub>R</sub>	3-7.8 kW
±	1224 × 550 × 438 mm
⚖	151 kg
%	81.9 %



Lugano 01  
ceramic



Lugano 02  
serpentine



Lugano 03  
steel



Lugano 04  
sandstone



## Lugano A

The Lugano A accumulation fireplace stove can also be fitted with special accumulation tiles in the space above the combustion chamber. This "mass" of accumulation elements can extend the heat radiation period of the stove by several hours.

A<sup>+</sup>

Lugano A 01 ceramic	
P <sub>R</sub>	3-7.8 kW
±	1530 × 550 × 457 mm
⚖	167 kg
%	81.9 %

☐ Accumulation



Lugano 01 A  
ceramic



Lugano 02 A  
serpentine



Lugano 03 A  
steel



Lugano 04 A  
sandstone





## Lugo N

The oval shape of the Lugo N fireplace stove helps create a cosy interior. It includes pleasant details, such as a sill above the combustion chamber or the door handle whose technical design lends the fireplace stove an elegant look.

A+

### Lugo N 02 serpentine

<b>P<sub>R</sub></b>	3-7.8 kW
<b>+</b>	1224 × 550 × 438 mm
<b>Ⓜ</b>	188 kg
<b>%</b>	81.9 %



Lugo N 01  
ceramic



Lugo N 02  
serpentine



Lugo N 03  
steel



Lugo N 04  
sandstone



## Lugo N Accumulation

The Lugo N A accumulation fireplace stove can also be fitted with special accumulation tiles in the space above the combustion chamber. This "mass" of accumulation elements can extend the heat radiation period of the stove by several hours.

A+

### Lugo N 01 A ceramic

<b>P<sub>R</sub></b>	3-7.8 kW
<b>+</b>	1530 × 550 × 457 mm
<b>Ⓜ</b>	170 kg
<b>%</b>	81.9 %

 Accumulation



Lugo N 01 A  
ceramic



Lugo N 02 A  
serpentine



Lugo N 03 A  
steel



Lugo N 04 A  
sandstone





## Lugo N oven

The perfect combination of the warmth of the hearth and great food is hard to resist. So why not treat yourself to the Lugo N BF fireplace stove that comes equipped with an oven? You deserve the best.

A+

Lugo N 01 BF ceramic	
Pr	3-7.8 kW
+	1552 x 550 x 456 mm
♻️	202 kg
%	81.9 %



Lugo N 01 BF  
ceramic



Lugo N 02 BF  
serpentine



Lugo N 03 BF  
steel



## Navia

A sensitive fusion of all the major stove dimensions has resulted in a unique design. The rounded and unique dimensions of the glass provide a large area for direct observation of the flames.

A+

Navia 01 ceramic	
Pr	3-7.8 kW
+	862 x 787 x 374 mm
♻️	149 kg
%	83.5 %



Navia 01  
ceramic



Navia 02  
serpentine



Navia 03  
steel





## Navia G

A generous combustion chamber with high quality designer components and precise, clean lines. Navia G fireplace stoves are designed to seamlessly integrate into your home.

A+

### Navia G 01 ceramic

<b>P<sub>r</sub></b>	3-7.8 kW
<b>+</b>	862 × 787 × 374 mm
<b>Ⓜ</b>	151 kg
<b>%</b>	83.5 %



Navia G 01  
ceramic



Navia G 02  
serpentine



Navia G 03  
steel



## Ovalis

The rounded and unique dimensions of the glass provide a large area for direct observation of your fire. The compact shape of the Ovalis fireplace stove combined with the wide combustion chamber make it a perfect fit for your interior.

A+

### Ovalis 04 sandstone

<b>P<sub>r</sub></b>	3-7.8 kW
<b>+</b>	1071 × 630 × 398 mm
<b>Ⓜ</b>	156 kg
<b>%</b>	83.5 %



Ovalis 01  
relief ceramic



Ovalis 02  
serpentine



Ovalis 03  
steel



Ovalis 04  
sandstone



Ovalis 05  
flat ceramic





## Ovalis A

A sensitive fusion of all the major dimensions of this accumulation stove has resulted in a unique design. The rounded and unique dimensions of the glass provide a large area for direct observation of your fire.

A+

<b>Ovalis 04 A sandstone</b>	
<b>P<sub>r</sub></b>	3-7.8 kW
<b>+</b>	1390 × 628 × 398 mm
<b>⊞</b>	172 kg
<b>%</b>	83.5 %



Ovalis 01 A  
relief ceramic

Ovalis 02 A  
serpentine

Ovalis 03 A  
steel

Ovalis 04 A  
sandstone

Ovalis 05 A  
flat ceramic



## Ovalis T

Its exceptionally small depth and oval shape mean this slim stove will even fit into small interiors. The stove rotates, allowing you to enjoy the view of your fire from almost anywhere.

A+

<b>Ovalis T 03 steel</b>	
<b>P<sub>r</sub></b>	3-7.8 kW
<b>+</b>	1015 × 628 × 398 mm
<b>⊞</b>	141 kg
<b>%</b>	83.5 %



Ovalis T 02  
serpentine

Ovalis T 03  
steel

Ovalis T 05  
ceramic





## Ovalis G

A sensitive combination of a large designer door glazing print with varnished control elements has given birth to the unique design of Ovalis G fireplace stoves.

A+

Ovalis G 02 serpentine	
P <sub>R</sub>	3-7.8 kW
±	1074 × 630 × 398 mm
Ⓜ	158 kg
%	83.5 %



Ovalis G 01  
relief ceramic

Ovalis G 02  
serpentine

Ovalis G 03  
steel

Ovalis G 04  
sandstone

Ovalis G 05  
flat ceramic



## Ovalis G Accumulation

A sensitive combination of a large designer door glazing print with varnished control elements has given birth to the unique design of Ovalis G A fireplace stoves.

A+

Ovalis G A 02 serpentine	
P <sub>R</sub>	3-7.8 kW
±	1390 × 628 × 398 mm
Ⓜ	179 kg
%	83.5 %

 Accumulation



Ovalis G 01 A  
relief ceramic

Ovalis G 02 A  
serpentine

Ovalis G 03 A  
steel

Ovalis 04 A  
sandstone

Ovalis 05 A  
flat ceramic





## Riano

The Riano fireplace stove is for those who love a prominent and clear-cut design. The stove's lines do not distract from the wide combustion chamber.

A

Riano 03 serpentine	
P <sub>R</sub>	3-7.8 kW
+	920 × 820 × 420 mm
♁	176 kg
%	80,1 %



Riano 01  
steel



Riano 02  
ceramic



Riano 03  
serpentine



## Riano N

Elegance and minimalism. These words precisely capture the essence of the Riano N fireplace stove. Its wide combustion chamber with a full-glass door offers ample heat and a beautiful view of the flames.

A

Riano N 05 serpentine	
P <sub>R</sub>	3-7.8 kW
+	995 × 827 × 410 mm
♁	162 kg
%	80,1 %



Riano N 01  
steel



Riano N 02  
ceramic



Riano N 03  
serpentine



Riano N 04  
ceramic



Riano N 05  
serpentine





## Siena N 01

The SIENA N fireplace stoves are designed as an all-tile stove which means that the ceramic tiles are the main material that sets its clear design direction and functionality. It stands out in a wide range of classic interiors, whether in houses or cottages. The elegantly rounded shapes and overall dimensional balance give these stoves a distinctive style.

A

### Siena N 01 ceramic

<b>P<sub>r</sub></b>	2,9-7,5 kW
<b>+</b>	848 × 696 × 425 mm
<b>Ⓜ</b>	134 kg
<b>%</b>	80,6 %



Siena N 01  
ceramic (77900)



Siena N 01  
ceramic (67300)



Siena N 01  
ceramic (19301)



## Siena N 02

The SIENA N fireplace stoves are designed as an all-tile stove which means that the ceramic tiles are the main material that sets its clear design direction and functionality. It stands out in a wide range of classic interiors, whether in houses or cottages.

A

### Siena N 02 ceramic

<b>P<sub>r</sub></b>	2,9-7,5 kW
<b>+</b>	977 × 652 × 403 mm
<b>Ⓜ</b>	149 kg
<b>%</b>	80,6 %



Siena N 02  
ceramic (77900)



Siena N 02  
ceramic (67300)



Siena N 02  
ceramic (19301)





## Soria N

The beauty of Soria N fireplace stoves is perfectly emphasized by their large glass door, offering a unique view of the fire. Lose yourself in the dancing flames.

A+

### Soria N 01 ceramic

<b>P<sub>r</sub></b>	2.8-7.2 kW
<b>+</b>	1554 × 517 × 517 mm
<b>⊞</b>	203z kg
<b>%</b>	83.9 %



## Stromboli N

The large combustion chamber on its elegant pedestal and rotating mechanism of the Stromboli N fireplace stove offer you the opportunity to enjoy its radiating heat anywhere in the room.

A

### Stromboli N 04 sandstone

<b>P<sub>r</sub></b>	3-7.8 kW
<b>+</b>	1073 × 666 × 475 mm
<b>⊞</b>	229 kg
<b>%</b>	80.1 %



Soria N 01  
ceramic



Soria N 02  
serpentine



Soria N 03  
steel



Soria N 04  
sandstone



Stromboli N 01  
serpentine



Stromboli N 02  
ceramic



Stromboli N 03  
steel



Stromboli N 04  
sandstone





## Tala N

The defining feature of the TALA N is the large door for an unobstructed view of the fire. The main material used for the body is sheet metal, which also determines the overall impression of the stove.

A

Tala 01 steel	
Pr	3-7.7 kW
+	1064 × 480 × 433 mm
♻️	111 kg
%	78.0 %



Tala N 01  
steel



Tala N 06  
steel



## Teon L

The design of the TEON stove is straight and clearly defined by rectangular elements. In combination with its compact proportions, the stove will find its place in any modern interior.

A

Teon L 03 steel	
Pr	2.9-7.5 kW
+	1056 × 500 × 380 mm
♻️	132 kg
%	80.6 %



Teon L 03  
steel





# DESIGN FIREPLACES





## Cara C 02, Cara CS 02

The Romotop Cara C 02 is a high quality accumulation fireplace that responds to the latest trends and needs of modern interior architecture. Its carefully balanced outer proportions, clean lines and dominating, wide three-sided glazing create an imposing whole to satisfy even the most demanding customers. The Cara CS 02 is a leaner variant which will perfectly suit low-energy homes.



Cara C 02  
serpentine



Cara CS 02  
serpentine

A+

### Cara C 02 serpentine

<b>P<sub>r</sub></b>	3,9-10,1 kW
<b>+</b>	1648 × 924 × 577 mm
<b>⊞</b>	343 kg
<b>%</b>	82,9 %

### Cara CS 02 serpentine

<b>P<sub>r</sub></b>	2,9-7,4 kW
<b>+</b>	1648 × 774 × 577 mm
<b>⊞</b>	316 kg
<b>%</b>	82,1 %



Accumulation

## Cara C N 03, Cara CS N 03

The Cara C N is a high quality fireplace which combines varnished metal sheeting and glass, and the whole geometry of the combustion chamber is based on the letter "C". Its elegant black colour combined with ample amounts of glazing lets the flames truly shine. The Romotop Cara CS N 03, a perfect minimalistic accumulation fireplace, has established a new trend in heating.



Cara C N 03  
steel



Cara CS N 03  
steel

A+

### Cara C N 03 steel

<b>P<sub>r</sub></b>	3,9-10,1 kW
<b>+</b>	1641 × 924 × 577 mm
<b>⊞</b>	272 kg
<b>%</b>	82,9 %

### Cara CS N 03 steel

<b>P<sub>r</sub></b>	2,9-7,4 kW
<b>+</b>	1643 × 774 × 577 mm
<b>⊞</b>	238 kg
<b>%</b>	82,1 %



Accumulation



# Technical information of fireplace stoves

Model - name	Adjustable output (kW)	Regulated hot-water output (kW)	Dimensions H x W x D (mm)	Smoke flue diameter (mm)	EAI diameter (mm)	Height of the rear outlet (mm)	Weight (kg)	Efficiency (%)	Average wood consumption (kg/hour)	Energy efficiency	Ecodesign 2022 15a B-VG Din + BimschV 2
ALEA 01 - ceramic	2,9-7,4	-	1305 x 468 x 468	150	125	1129	159	82,9	1,6	A*	● ● ● ● ●
ALEA 02 - serpentine	2,9-7,4	-	1305 x 468 x 468	150	125	1129	165	82,9	1,6	A*	● ● ● ● ●
ALEA 03 - steel	2,9-7,4	-	1243 x 468 x 468	150	125	1129	161	82,9	1,6	A*	● ● ● ● ●
ALEA 04 - sandstone	2,9-7,4	-	1305 x 468 x 468	150	125	1129	163	82,9	1,6	A*	● ● ● ● ●
ALEA 01 A - ceramic	2,9-7,4	-	1584 x 468 x 468	150	125	1129/1376	173	82,9	1,6	A*	● ● ● ● ●
ALEA 02 A - serpentine	2,9-7,4	-	1584 x 468 x 468	150	125	1129/1376	178	82,9	1,6	A*	● ● ● ● ●
ALEA 03 A - steel	2,9-7,4	-	1522 x 468 x 468	150	125	1129/1376	175	82,9	1,6	A*	● ● ● ● ●
ALEA 04 A - sandstone	2,9-7,4	-	1584 x 468 x 468	150	125	1129/1376	177	82,9	1,6	A*	● ● ● ● ●
ALEDO 01 - ceramic	3-7,8	-	862 x 740 x 321	150	125	729	151	83,5	1,6	A*	● ● ● ● ●
ALEDO 02 - serpentine	3-7,8	-	862 x 740 x 322	150	125	729	177	83,5	1,6	A*	● ● ● ● ●
ALEDO 03 - steel	3-7,8	-	840 x 696 x 322	150	125	729	164	83,5	1,6	A*	● ● ● ● ●
ALPERA E 01 - ceramic	2-6,5	-	996 x 528 x 394	150	125	863	121	80,5	1,2	A	● ● ● ● ●
ALPERA E 02 - serpentine	2-6,5	-	996 x 528 x 394	150	125	863	137	80,5	1,2	A	● ● ● ● ●
ALPERA E 03 - steel	2-6,5	-	974 x 528 x 394	150	125	863	117	80,5	1,2	A	● ● ● ● ●
ALPERA F 01 - ceramic	2-6,5	-	996 x 520 x 318	150	125	863	130	80,5	1,2	A	● ● ● ● ●
ALPERA F 02 - serpentine	2-6,5	-	996 x 520 x 318	150	125	863	158	80,5	1,2	A	● ● ● ● ●
ALPERA F 03 - steel	2-6,5	-	974 x 520 x 318	150	125	863	119	80,5	1,2	A	● ● ● ● ●
ALPERA G 01 - ceramic	2-6,5	-	996 x 516 x 397	150	125	863	133	80,5	1,2	A	● ● ● ● ●
ALPERA G 02 - serpentine	2-6,5	-	996 x 516 x 397	150	125	863	153	80,5	1,2	A	● ● ● ● ●
ALPERA G 03 - steel	2-6,5	-	974 x 516 x 397	150	125	863	124	80,5	1,2	A	● ● ● ● ●
BURGOS 01 - ceramic	3,8-9,8	-	1175 x 756 x 507	150	125	1008	210	82,7	2,2	A*	● ● ● ● ●
BURGOS 02 - serpentine	3,8-9,8	-	1176 x 756 x 507	150	125	1008	242	82,7	2,2	A*	● ● ● ● ●
BURGOS 03 - steel	3,8-9,8	-	1150 x 756 x 507	150	125	1008	203	82,7	2,2	A*	● ● ● ● ●
BURGOS 04 - sandstone	3,8-9,8	-	1176 x 756 x 507	150	125	1008	235	82,7	2,2	A*	● ● ● ● ●
ESQUINA 3G - steel	3-7,7	-	1506 x 403 x 403	150	125	1383	170	81,4	1,7	A*	● ● ● ● ●
EVORA 01 - ceramic	2-6,5	-	996 x 528 x 398	150	125	863	122	80,5	1,2	A	● ● ● ● ●
EVORA 02 - serpentine	2-6,5	-	996 x 528 x 398	150	125	863	138	80,5	1,2	A	● ● ● ● ●
EVORA 03 - steel	2-6,5	-	974 x 528 x 398	150	125	863	117	80,5	1,2	A	● ● ● ● ●
EVORA 07 - sandstone	2-6,5	-	996 x 528 x 398	150	125	863	126	80,5	1,2	A	● ● ● ● ●
EVORA 01 AKUM - ceramic	2-6,5	-	1312 x 528 x 398	150	125	863/1133	140	80,5	1,2	A	● ● ● ● ●
EVORA 02 AKUM - serpentine	2-6,5	-	1312 x 528 x 398	150	125	863/1133	154	80,5	1,2	A	● ● ● ● ●
EVORA 03 AKUM - steel	2-6,5	-	1312 x 528 x 398	150	125	863/1133	131	80,5	1,2	A	● ● ● ● ●
EVORA 04 AKUM - sandstone	2-6,5	-	1312 x 528 x 398	150	125	863/1133	144	80,5	1,2	A	● ● ● ● ●
EVORA T 01 - ceramic	2-6,5	-	997 x 528 x 398	150	125	863	124	80,5	1,2	A	● ● ● ● ●
EVORA T 02 - serpentine	2-6,5	-	997 x 528 x 398	150	125	863	136	80,5	1,2	A	● ● ● ● ●
EVORA T 03 - steel	2-6,5	-	975 x 528 x 398	150	125	863	122	80,5	1,2	A	● ● ● ● ●
EVORA T 07 - sandstone	2-6,5	-	997 x 528 x 398	150	125	863	127	80,5	1,2	A	● ● ● ● ●

Model - name	Adjustable output (kW)	Regulated hot-water output (kW)	Dimensions H x W x D (mm)	Smoke flue diameter (mm)	EAI diameter (mm)	Height of the rear outlet (mm)	Weight (kg)	Efficiency (%)	Average wood consumption (kg/hour)	Energy efficiency	Ecodesign 2022 15a B-VG Din + BimschV 2
FANTASY 1 - ceramic	2,9-7,5	-	1598 x 548 x 392	150	125	1276/1414	197	80,6	1,6	A	● ● ● ● ●
FANTASY 2 - ceramic	4,0-11,0	-	1455 x 557 x 402	150	125	1229/1296	193	80,6	1,6	A	● ● ● ● ●
GREMIO 1, GREMIO 1G - ceramic	2,9-7,5	-	1455 x 617 x 432	150	125	1229/1296	201	80,6	1,6	A	● ● ● ● ●
GREMIO 2, GREMIO 2G - ceramic	2,9-7,5	-	1455 x 617 x 432	150	125	1229/1296	194	80,6	1,6	A	● ● ● ● ●
GREMIO 3, GREMIO 3G - ceramic	2,9-7,5	-	1455 x 617 x 432	150	125	1229/1296	193	80,6	1,6	A	● ● ● ● ●
GREMIO 4, GREMIO 4G - ceramic	2,9-7,5	-	1451 x 741 x 457	150	125	1229/1296	214	80,6	1,6	A	● ● ● ● ●
GREMIO 5, GREMIO 5G - ceramic	2,9-7,5	-	1453 x 616 x 431	150	125	1229/1296	199	80,6	1,6	A	● ● ● ● ●
LAREDO 01 - ceramic	2-6,5	-	996 x 528 x 398	150	125	863	124	80,5	1,2	A	● ● ● ● ●
LAREDO 02 - serpentine	2-6,5	-	996 x 528 x 398	150	125	863	140	80,5	1,2	A	● ● ● ● ●
LAREDO 03 - steel	2-6,5	-	974 x 528 x 398	150	125	863	119	80,5	1,2	A	● ● ● ● ●
LAREDO 04 - sandstone	2-6,5	-	996 x 528 x 398	150	125	863	128	80,5	1,2	A	● ● ● ● ●
LAREDO 01 AKUM - ceramic	2-6,5	-	1312 x 528 x 398	150	125	863/1133	142	80,5	1,2	A	● ● ● ● ●
LAREDO 02 AKUM - serpentine	2-6,5	-	1312 x 528 x 398	150	125	863/1133	156	80,5	1,2	A	● ● ● ● ●
LAREDO 03 AKUM - steel	2-6,5	-	1312 x 528 x 398	150	125	863/1133	133	80,5	1,2	A	● ● ● ● ●
LAREDO 04 AKUM - sandstone	2-6,5	-	1312 x 528 x 398	150	125	863/1133	146	80,5	1,2	A	● ● ● ● ●
LAREDO F 01 - ceramic	2-6,5	-	996 x 520 x 318	150	125	863	131	80,5	1,2	A	● ● ● ● ●
LAREDO F 02 - serpentine	2-6,5	-	996 x 520 x 318	150	125	863	158	80,5	1,2	A	● ● ● ● ●
LAREDO F 03 - steel	2-6,5	-	974 x 520 x 318	150	125	863	120	80,5	1,2	A	● ● ● ● ●
LAREDO T 01 - ceramic	2-6,5	-	997 x 528 x 398	150	125	863	126	80,5	1,2	A	● ● ● ● ●
LAREDO T 02 - serpentine	2-6,5	-	997 x 528 x 398	150	125	863	138	80,5	1,2	A	● ● ● ● ●
LAREDO T 03 - steel	2-6,5	-	975 x 528 x 398	150	125	863	124	80,5	1,2	A	● ● ● ● ●
LAREDO T 04 - sandstone	2-6,5	-	997 x 528 x 398	150	125	863	129	80,5	1,2	A	● ● ● ● ●
LUGANO 01 - ceramic	3-7,8	-	1224 x 550 x 438	150	125	922	151	81,9	1,7	A*	● ● ● ● ●
LUGANO 02 - serpentine	3-7,8	-	1224 x 550 x 438	150	125	922	185	81,9	1,7	A*	● ● ● ● ●
LUGANO 03 - steel	3-7,8	-	1202 x 550 x 438	150	125	922	138	81,9	1,7	A*	● ● ● ● ●
LUGANO 04 - sandstone	3-7,8	-	1224 x 550 x 438	150	125	922	177	81,9	1,7	A*	● ● ● ● ●
LUGANO 01 A - ceramic	3-7,8	-	1530 x 550 x 457	150	125	988/1289	167	81,9	1,7	A*	● ● ● ● ●
LUGANO 02 A - serpentine	3-7,8	-	1530 x 550 x 457	150	125	988/1289	200	81,9	1,7	A*	● ● ● ● ●
LUGANO 03 A - steel	3-7,8	-	1530 x 550 x 457	150	125	988/1289	151	81,9	1,7	A*	● ● ● ● ●
LUGANO 04 A - sandstone	3-7,8	-	1530 x 550 x 457	150	125	988/1289	194	81,9	1,7	A*	● ● ● ● ●
LUGO N 01 - ceramic	3-7,8	-	1224 x 550 x 438	150	125	922	154	81,9	1,7	A*	● ● ● ● ●
LUGO N 02 - serpentine	3-7,8	-	1224 x 550 x 438	150	125	922	188	81,9	1,7	A*	● ● ● ● ●
LUGO N 03 - steel	3-7,8	-	1202 x 550 x 438	150	125	922	141	81,9	1,7	A*	● ● ● ● ●
LUGO N 04 - sandstone	3-7,8	-	1224 x 550 x 438	150	125	922	180	81,9	1,7	A*	● ● ● ● ●
LUGO N 01 A - ceramic	3-7,8	-	1530 x 550 x 457	150	125	988/1289	170	81,9	1,7	A*	● ● ● ● ●
LUGO N 02 A - serpentine	3-7,8	-	1530 x 550 x 457	150	125	988/1289	203	81,9	1,7	A*	● ● ● ● ●
LUGO N 03 A - steel	3-7,8	-	1530 x 550 x 457	150	125	988/1289	154	81,9	1,7	A*	● ● ● ● ●
LUGO N 04 A - sandstone	3-7,8	-	1530 x 550 x 457	150	125	988/1289	197	81,9	1,7	A*	● ● ● ● ●



## Technical information of fireplace stoves

Model - name	Adjustable output (kW)	Regulated hot-water output (kW)	Dimensions H x W x D (mm)	Smoke flue diameter (mm)	EAI diameter (mm)	Height of the rear outlet (mm)	Weight (kg)	Efficiency (%)	Average wood consumption (kg/hour)	Energy efficiency	Ecodesign 2022 15a B-VG	Din + BimschV 2
LUGO N 01 BF - ceramic, trouba	3-7.8	-	1552 x 550 x 456	150	125	1369	202	81.9	1.7	A+	•••••	•••••
LUGO N 02 BF - serpentine, oven	3-7.8	-	1552 x 550 x 456	150	125	1369	241	81.9	1.7	A+	•••••	•••••
LUGO N 03 BF - steel, trouba	3-7.8	-	1530 x 550 x 456	150	125	1369	187	81.9	1.7	A+	•••••	•••••
NAVIA 01 - ceramic	3-7.8	-	862 x 787 x 374	150	125	729	149	83.5	1.6	A+	•••••	•••••
NAVIA 02 - serpentine	3-7.8	-	862 x 787 x 374	150	125	729	179	83.5	1.6	A+	•••••	•••••
NAVIA 03 - steel	3-7.8	-	840 x 787 x 374	150	125	729	142	83.5	1.6	A+	•••••	•••••
NAVIA G 01 - ceramic	3-7.8	-	862 x 787 x 374	150	125	729	151	83.5	1.6	A+	•••••	•••••
NAVIA G 02 - serpentine	3-7.8	-	862 x 787 x 374	150	125	729	181	83.5	1.6	A+	•••••	•••••
NAVIA G 03 - steel	3-7.8	-	840 x 787 x 374	150	125	729	145	83.5	1.6	A+	•••••	•••••
OVALIS 01 - relief ceramic	3-7.8	-	1071 x 630 x 398	150	125	938	138	83.5	1.6	A+	•••••	•••••
OVALIS 02 - serpentine	3-7.8	-	1071 x 630 x 398	150	125	938	156	83.5	1.6	A+	•••••	•••••
OVALIS 03 - steel	3-7.8	-	1071 x 630 x 398	150	125	938	134	83.5	1.6	A+	•••••	•••••
OVALIS 04 - sandstone	3-7.8	-	1071 x 630 x 398	150	125	938	152	83.5	1.6	A+	•••••	•••••
OVALIS 05 - flat ceramic	3-7.8	-	1071 x 630 x 398	150	125	938	138	83.5	1.6	A+	•••••	•••••
OVALIS 01 A - relief ceramic	3-7.8	-	1390 x 628 x 398	150	125	938/1183	159	83.5	1.6	A+	•••••	•••••
OVALIS 02 A - serpentine	3-7.8	-	1390 x 628 x 398	150	125	938/1183	175	83.5	1.6	A+	•••••	•••••
OVALIS 03 A - steel	3-7.8	-	1390 x 628 x 398	150	125	938/1183	150	83.5	1.6	A+	•••••	•••••
OVALIS 04 A - sandstone	3-7.8	-	1390 x 628 x 398	150	125	938/1183	171	83.5	1.6	A+	•••••	•••••
OVALIS 05 A - flat ceramic	3-7.8	-	1390 x 628 x 398	150	125	938/1183	159	83.5	1.6	A+	•••••	•••••
OVALIS T 02 - serpentine	3-7.8	-	1037 x 630 x 398	150	125	904	156	83.5	1.6	A+	•••••	•••••
OVALIS T 03 - steel	3-7.8	-	1015 x 628 x 398	150	125	904	141	83.5	1.6	A+	•••••	•••••
OVALIS T 05 - flat ceramic	3-7.8	-	1037 x 630 x 398	150	125	904	143	83.5	1.6	A+	•••••	•••••
OVALIS G 01 - relief ceramic	3-7.8	-	1071 x 630 x 398	150	125	938	141	83.5	1.6	A+	•••••	•••••
OVALIS G 02 - serpentine	3-7.8	-	1071 x 630 x 398	150	125	938	158	83.5	1.6	A+	•••••	•••••
OVALIS G 03 - steel	3-7.8	-	1049 x 628 x 398	150	125	938	136	83.5	1.6	A+	•••••	•••••
OVALIS G 04 - sandstone	3-7.8	-	1071 x 630 x 398	150	125	938	154	83.5	1.6	A+	•••••	•••••
OVALIS G 05 - flat ceramic	3-7.8	-	1071 x 630 x 398	150	125	938	141	83.5	1.6	A+	•••••	•••••
OVALIS G 01 A - relief ceramic	3-7.8	-	1390 x 628 x 398	150	125	938/1183	163	83.5	1.6	A+	•••••	•••••
OVALIS G 02 A - serpentine	3-7.8	-	1390 x 628 x 398	150	125	938/1183	179	83.5	1.6	A+	•••••	•••••
OVALIS G 03 A - steel	3-7.8	-	1390 x 628 x 398	150	125	938/1183	154	83.5	1.6	A+	•••••	•••••
OVALIS G 04 A - sandstone	3-7.8	-	1390 x 628 x 398	150	125	938/1183	176	83.5	1.6	A+	•••••	•••••
OVALIS G 05 A - flat ceramic	3-7.8	-	1390 x 628 x 398	150	125	938/1183	164	83.5	1.6	A+	•••••	•••••
RIANO 01 - steel	3-7.8	-	880 x 810 x 410	150	-	762	142	80.1	1.7	A	•••••	•••••
RIANO 02 - ceramic	3-7.8	-	904 x 834 x 434	150	-	762	155	80.1	1.7	A	•••••	•••••
RIANO 03 - serpentine	3-7.8	-	920 x 820 x 420	150	-	762	176	80.1	1.7	A	•••••	•••••

Model - name	Adjustable output (kW)	Regulated hot-water output (kW)	Dimensions H x W x D (mm)	Smoke flue diameter (mm)	EAI diameter (mm)	Height of the rear outlet (mm)	Weight (kg)	Efficiency (%)	Average wood consumption (kg/hour)	Energy efficiency	Ecodesign 2022 15a B-VG	Din + BimschV 2
RIANO N 01 - steel	3-7.8	-	963 x 827 x 410	150	125	842	162	80.1	1.7	A	•••••	•••••
RIANO N 02 - ceramic	3-7.8	-	995 x 827 x 410	150	125	842	190	80.1	1.7	A	•••••	•••••
RIANO N 03 - serpentine	3-7.8	-	995 x 827 x 410	150	125	842	239	80.1	1.7	A	•••••	•••••
RIANO N 04 - ceramic	3-7.8	-	995 x 827 x 410	150	125	842	156	80.1	1.7	A	•••••	•••••
RIANO N 05 - serpentine	3-7.8	-	995 x 827 x 410	150	125	842	174	80.1	1.7	A	•••••	•••••
SIENA N 01 - ceramic	2.9-7.5	-	848 x 696 x 425	150	125	707	134	80.6	1.6	A	•••••	•••••
SIENA N 02 - ceramic	2.9-7.5	-	977 x 652 x 403	150	125	707	149	80.6	1.6	A	•••••	•••••
SORIA N 01 - ceramic	2.8-7.2	-	1554 x 517 x 517	150	125	1340	203	83.9	1.5	A+	•••••	•••••
SORIA N 02 - serpentine	2.8-7.2	-	1545 x 518 x 518	150	125	1340	295	83.9	1.5	A+	•••••	•••••
SORIA N 03 - steel	2.8-7.2	-	1501 x 518 x 518	150	125	1340	173	83.9	1.5	A+	•••••	•••••
SORIA N 04 - sandstone	2.8-7.2	-	1545 x 518 x 518	150	125	1340	266	83.9	1.5	A+	•••••	•••••
STROMBOLI N 01 - serpentine	3-7.8	-	1073 x 666 x 475	150	125	-	229	80.1	1.7	A	•••••	•••••
STROMBOLI N 02 - ceramic	3-7.8	-	1074 x 672 x 478	150	125	-	175	80.1	1.7	A	•••••	•••••
STROMBOLI N 03 - steel	3-7.8	-	1047 x 654 x 463	150	125	-	159	80.1	1.7	A	•••••	•••••
STROMBOLI N 04 - sandstone	3-7.8	-	1073 x 666 x 475	150	125	-	229	80.1	1.7	A	•••••	•••••
TALA N 01 - steel	3-7.7	-	1064 x 480 x 433	150	-	960	111	78.0	1.8	A	•••••	•••••
TALA N 06 - steel	3-7.7	-	1064 x 500 x 390	150	-	960	110	78.0	1.8	A	•••••	•••••
TEON L 03 - steel	2.9-7.5	-	1056 x 500 x 380	150	125	945	132	80.6	1.6	A	•••••	•••••

## Technical information of design fireplaces

Model - name	Adjustable output (kW)	Dimensions H x W x D (mm)	Smoke flue diameter (mm)	EAI diameter (mm)	Height of the rear outlet (mm)	Weight (kg)	Efficiency (%)	Average wood consumption (kg/hour)	Energy efficiency	Ecodesign 2022 15a B-VG	Din + BimschV 2
CARA C 02 - serpentine	3.9-10.1	1648 x 924 x 577	150	125	1346	343	82.9	2.2	A+	•••••	•••••
CARA CS 02 - serpentine	2.9-7.4	1648 x 774 x 577	150	125	1346	316	82.1	1.6	A+	•••••	•••••
CARA C N 03 - steel	3.9-10.1	1641 x 924 x 577	150	125	1346	272	82.9	2.2	A+	•••••	•••••
CARA CS N 03 - steel	2.9-7.4	1643 x 774 x 577	150	125	1346	238	82.1	1.6	A+	•••••	•••••



# Glaze colours

---



90002



90901



95508



51502



52808



54505



58507



49000



49400



30301



92360



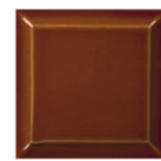
61660



63360



60100



67300



68692



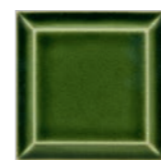
73706



75705

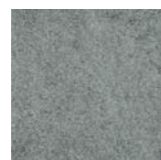


77900



19301

## Stones



serpentine



sandstone

## Body finishes



black





ROMOTOP spol. s r. o.  
Komenského 325  
742 01 Suchdol nad Odrou  
Czech Republic

[www.romotop.com](http://www.romotop.com)

